



小心!!!

掠奪性期刊 與它的同類



臺北醫學大學圖書館

Predatory
Journals

[掠奪]

Deceptive
Journals

[欺騙]

Journals operating in bad faith

Illegitimate
Journals

[非法]

Hijacked
Journal

[劫持]



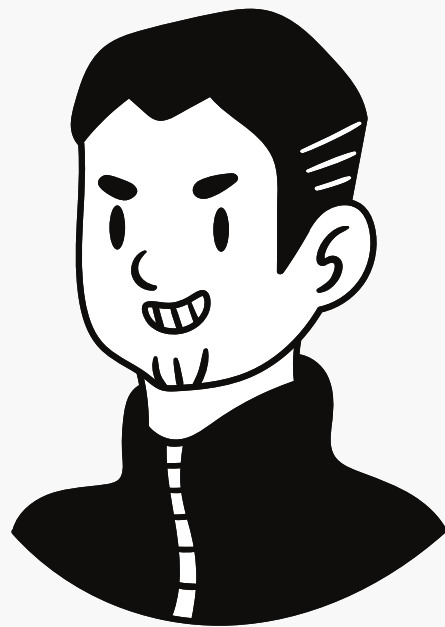
什麼是掠奪性期刊

掠奪性出版商利用OA的作者支付APC+讀者免費取得全文特點，以 Email 吸引作者投稿，在接受稿件的同時向作者索取APC，宣稱他們提供同儕審查、編輯、校稿等服務，但實際上卻沒有。他們用欺騙和不透明的方式讓作者誤會他們是正當的出版社。

然而，他們對學術毫無興趣，只想以此牟利。

[Reference] 中研院研究誠信提升計畫辦公室, **不可不慎的掠奪性出版**,
<https://newsletter.sinica.edu.tw/不可不慎的掠奪性出版/>

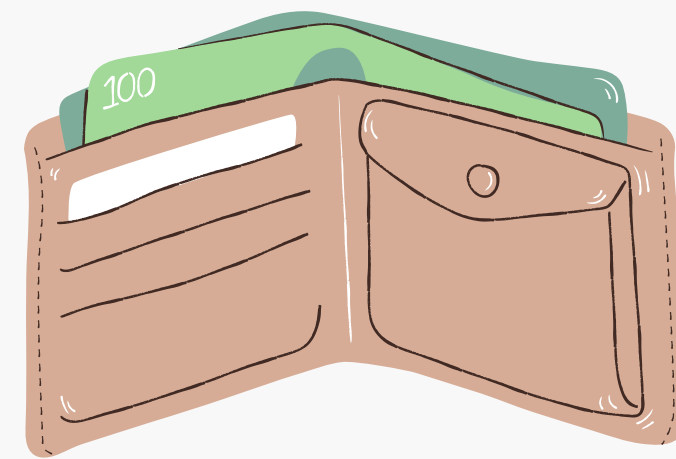
什麼是掠奪性期刊



披著OA的皮



佯裝有品質保證

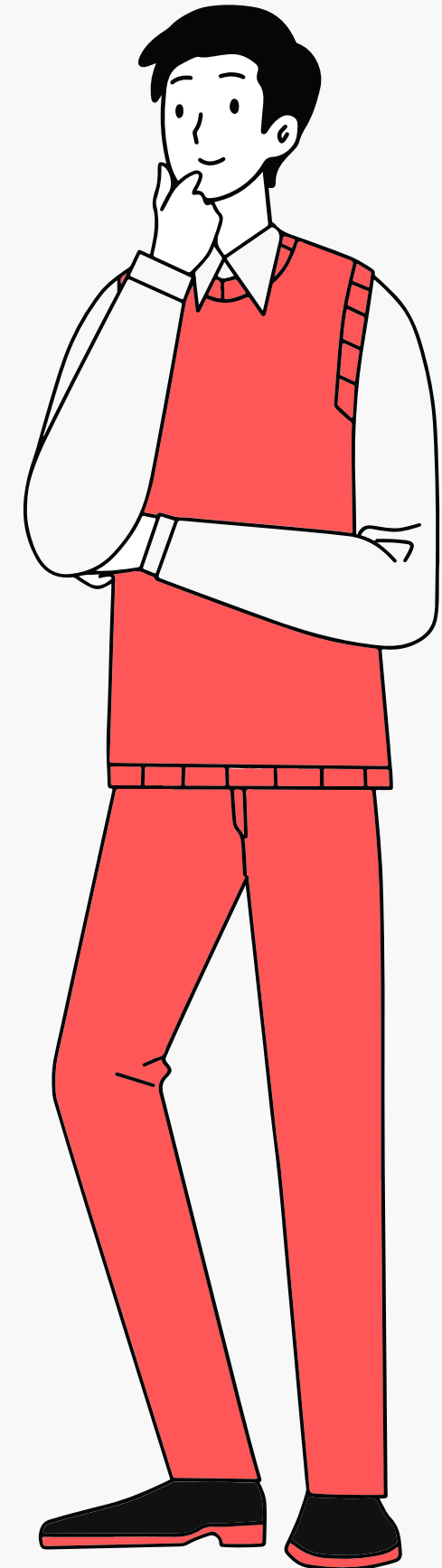


行詐騙/勒索之實

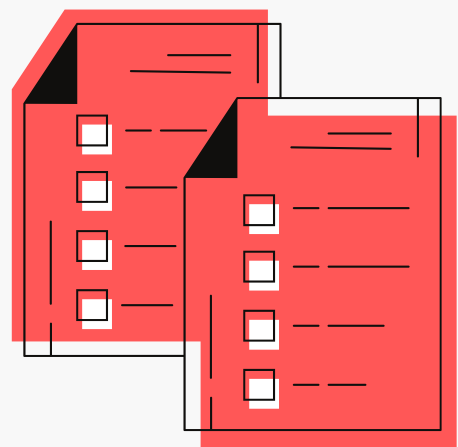


為什麼要注意

→ **掠奪性期刊** ←
及它的同類



理由



文財兩失

想要拿回自己的文章，常要付一筆頗為昂貴的費用；不贖回文章又從此失去投到優良期刊的機會。



無助於提升個人學術信譽

對學術成就毫無幫助，甚至可能會有負面影響，並且浪費機會。



可能影響後續研究

手稿可能可以被拿回，但是出版社若沒有將該篇文章下架，後繼的研究在這篇缺乏同儕審查、可能存在錯誤的研究上堆疊，對往後的研究可能有不良影響，造成學術資源的浪費。

.....
[Reference] 中研院研究誠信提升計畫辦公室, **不可不慎的掠奪性出版**,
<https://newsletter.sinica.edu.tw/不可不慎的掠奪性出版/>



掠奪性期刊的型態

01

以假亂真型

名稱與現有知名期刊相似

02

膺品型

或稱劫持性期刊
與現仍發行的期刊並行

03

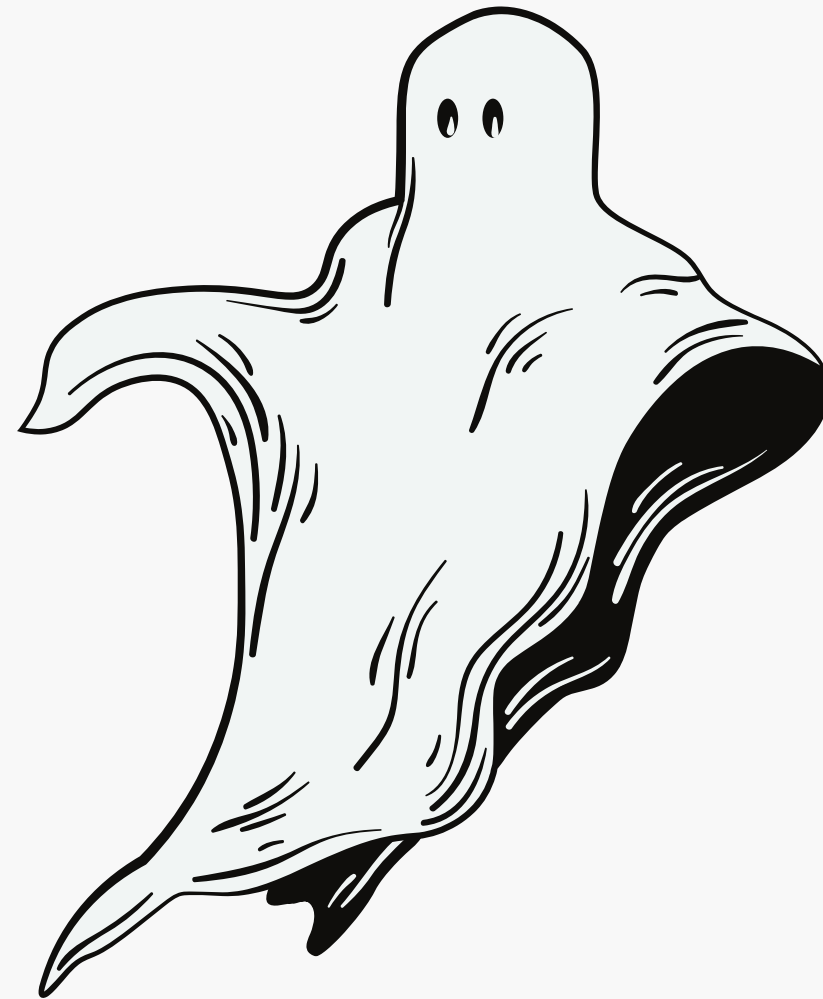
僵屍型

將早已停刊的期刊
名拿來使用

以假亂真型

**Clinical & Experimental
Ophthalmology.**

(真)



**Journal of Clinical &
Experimental Ophthalmology.**

(假)

僵屍型



**Neuropsychiatry
(London)**

publisher: Future Medicine

[延伸資訊] 同名同ISSN期刊
已於2015年停刊

**Neuropsychiatry
(London)**

publisher: ???

[延伸資訊] 線上目錄小心看
[NLM Catalog](#)

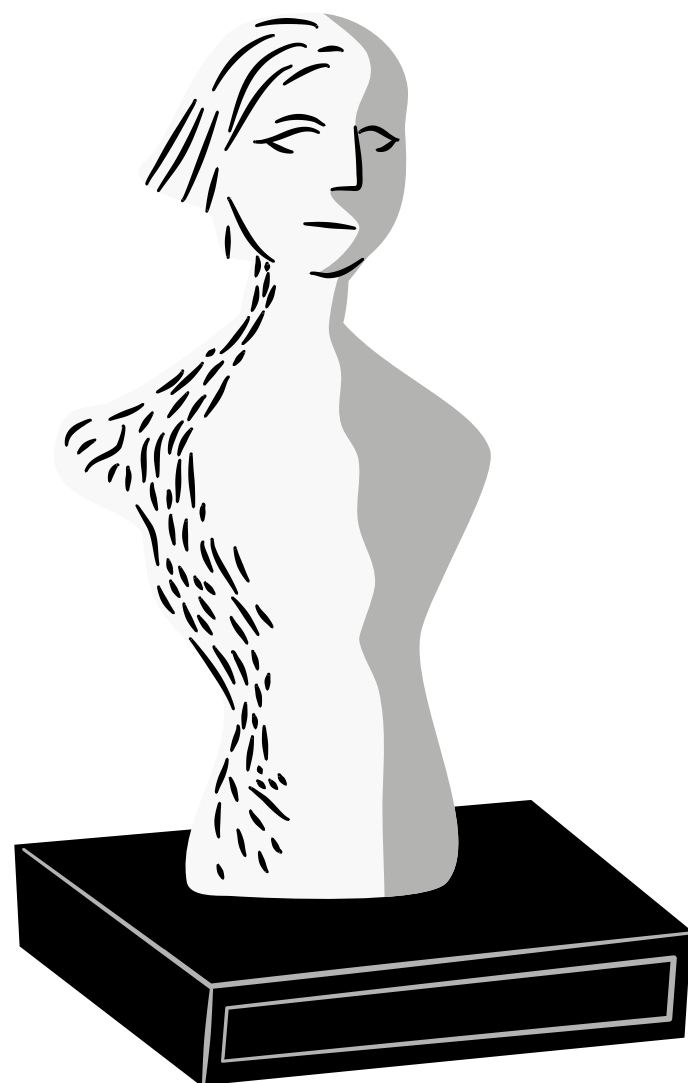


膺品型

CLOINED JOURNALS

Journal of Shanghai Jiaotong
University.

(真)



Journal of Shanghai Jiaotong
University.

(假)

破解線索



01

是否承諾快速審稿 / 快速出版

經驗談: 通常會強調收到款項後幾小時內完成出版

02

是否列出假IF值或標榜收入奇怪的資料庫中

經驗談: 列出百度或使用舊的資料庫icon

03

查看並確認編輯群

經驗談: 看過編輯群列出已過世的臺大教授



Journal Checklist

- Think. Check. Submit
- Open Access Journal Quality Indicators
- Journal Evaluation Tool (含量表)
- 掠奪性期刊的慣用手法

- 北醫圖初檢指標暨說明檔

以假亂真型

疑點

POINT 1

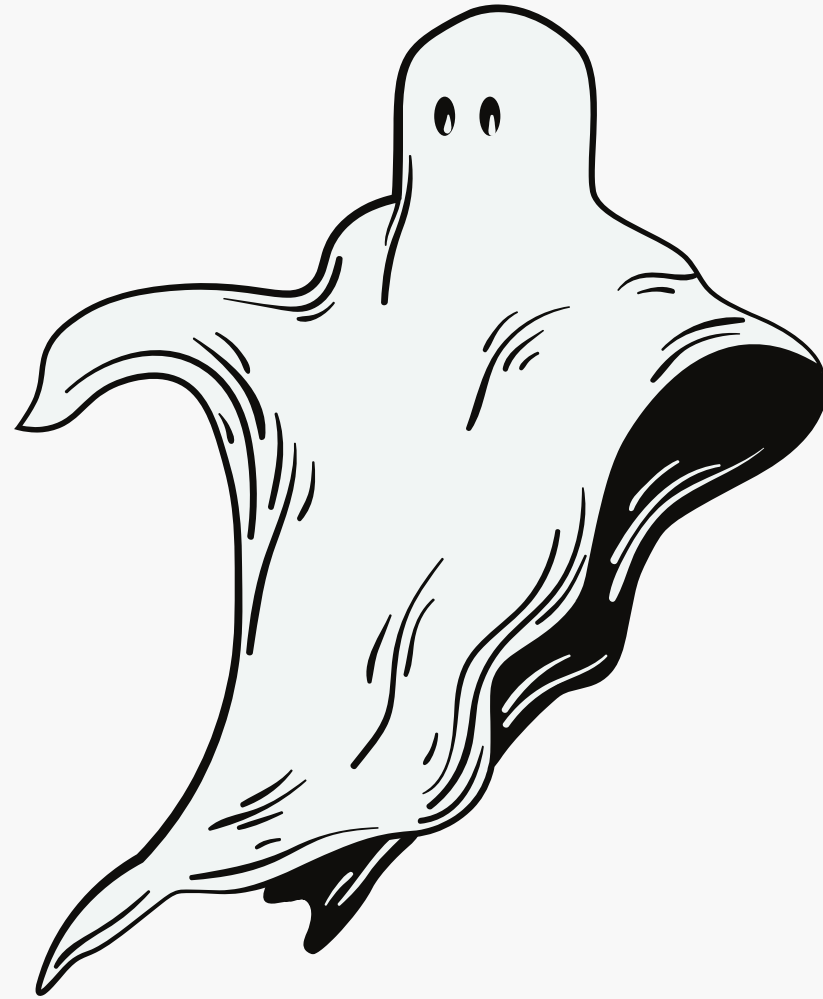
提供非官方的IF值

POINT 2

每個卷期收錄文章量差異頗大

POINT 3

快速審稿



**Journal of Clinical &
Experimental Ophthalmology.**

publisher: Longdom Publishing.

REACT



Edited By: Justine R. Smith

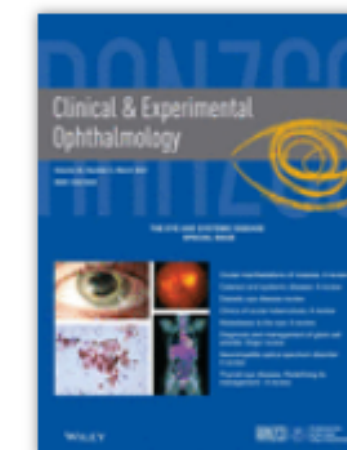
Impact factor: 2.832

2019 Journal Citation Reports (Clarivate Analytics): 15/60 (Ophthalmology)

Online ISSN: 1442-9071

Acceptance rate: Approximately 10%

© Royal Australian and New Zealand College of Ophthalmologists



LATEST ISSUE >

Volume 49, Issue 2

The Eye and Systemic Disease

March 2021

HOME

ABOUT



CONTRIBUTE



BROWSE



CEO and COVID-19

To the CEO community:

Due to the challenging and unprecedented issues faced as we battle the COVID-19 pandemic, we appreciate that many of our editors, reviewers and authors are being deployed in other areas, with different sets of responsibilities and challenges as they support our health systems to care for patients.

We recognise that issues related to our journals will invariably take a back seat until this crisis ebbs as efforts are concentrated towards patient care. We will grant extensions to any author or reviewer as needed. If you are an author who has recently submitted a manuscript, please be patient as our review capacity may be drastically reduced.

Sincerely,

Justine Smith

CEO Editor-in-Chief



Submit an Article



Get content alerts



Subscribe to this journal

Published on behalf of the Royal Australian and New Zealand College of Ophthalmologists





Journal of Clinical and Experimental Ophthalmology

ISSN: 2155-9570

Open Access

+44 2038689735

[Journal Home](#)
[Editorial Panel ▾](#)
[Instructions for Authors](#)
[Submit Manuscript](#)
[In press](#)
[Current Issue](#)
[Archive](#)
[Special Issues ▾](#)
[Contact](#)

25+ Million Readerbase

PMC/PubMed Indexed Articles

Mitochondrial haplogroup L1c2 is associated with increased disease severity in African American patients with primary open-angle glaucoma

Prevalence of Hepatocyte Growth Factor and Autoantibodies to α -HGF as a New Etiology for Bilateral Diffuse Uveal Melanocytic Proliferation Masquerading as Neovascular Age-Related Macular Degeneration

[View More »](#)

Useful Links

- [Covid-19 Journal Articles Issues](#)
- [Aims and Scope](#)
- [Advertising](#)

Editorial Board



Raul Martin

Editor-in-Chief

Head of the Optometry Research Group, IOBA Eye Institute University of Valladolid, Spain

Sayon Roy

Professor, Department of Medicine and Ophthalmology Boston University, United States

Yoko Miura

Head of Retina Research Group University of Luebeck, Germany

Submit Manuscript

Journal Impact Factor 0.65*

Submit manuscript at www.longdom.org/submissions/clinical-experimental-ophthalmology.html or send as an e-mail attachment to the Editorial Office at

Table of Contents

Volume 12, Issue 1

RSS

Archive





25+ Million Readerbase

PMC/PubMed Indexed Articles

Mitochondrial haplogroup L1c2 is associated with increased disease severity in African American patients with primary open-angle glaucoma

Prevalence of Hepatocyte Growth Factor and Autoantibodies to α -HGF as a New Etiology for Bilateral Diffuse Uveal Melanocytic Proliferation Masquerading as Neovascular Age-Related Macular Degeneration

[View More »](#)

Useful Links

- > Covid-19 Journal Articles Issues
- > Aims and Scope
- > Advertising
- > Citations Report

Submit Manuscript

Journal of Clinical & Experimental Ophthalmology (JCEO) - Open Access using online manuscript submission, review and tracking systems of **OMICS Group** for quality and quick review processing. **OMICS Group** is using Online Review and Editorial Tracking Systems for quality review process. Editorial Tracking System is an online submission and review system, where authors can submit manuscripts and track their progress. Reviewers can download manuscripts and submit their opinions. Editors can manage the whole submission/review/revise/publish process. Publishers can see what manuscripts are in the pipeline awaiting publication. E-mail is sent automatically to concerned persons when significant events occur.

Submit manuscript at <https://www.longdom.org/submissions/clinical-experimental-ophthalmology.html> as an e-mail attachment to the Editorial Office at , manuscripts@longdom.org

Manuscripts number will be provided to the corresponding author within 72 hours for the respective manuscript submitted.

- 21 day **rapid review process** with international peer-review standards.
- Timeline of processing from Submission to Publication is 45 days.
- **Manuscript will be published within 7days of acceptance.**

Relevant Topics

- > Autonomic Dysregulation
- > Best Journals In Pediatric Ophthalmology
- > Best Open Access Journals In Pediatric Ophthalmology
- > Autonomic Dysregulation
- > Best Open Access Journals In Pediatric Ophthalmology
- > Best Open Access Journals In Pediatric Ophthalmology

疑點

POINT 1

刊名加註London
聯絡地址卻是比利時

POINT 2

無出版社相關資訊及說明

POINT 3

每個卷期收錄文章量差異頗大

僵屍型



Neuropsychiatry.
(London)

publisher: ???

ISSN: ISSN
1758-2008 (Print)
1758-2016 (Electronic)

Neuropsychiatry (London)



All submissions of the EM system will be redirected to **Online Manuscript Submission System**. Authors are requested to submit articles directly to **Online Manuscript Submission System** of respective journal.

Welcome to the Neuropsychiatry (London)

Neuropsychiatry is an important branch of medical science. Considering the clinical aspects and its close association with behavioral neurology, Neuropsychiatry journal aims at updating researchers, clinicians and academicians with most recent information on every aspect of neuropsychiatry. The journal provides a platform for exchanging and sharing the latest developments in the relevant area.

h5-index: 13 h5-median: 22



FAKE!



Indexing Information:

Journal Citation Reports/Science Edition, Science Citation Index Expanded (SciSearch®), Scopus, EMBASE/Excerpta Medica, EMCare, Europub

Neuropsychiatry (London) publishes peer-reviewed articles on a wide range of topics including neuropsychiatric disorders, clinical neuropsychiatry, cognitive neuropsychiatry, neuroimaging etc. Submissions are subjected to double-blinded peer review before they are accepted for publication. The journal accepts articles in the form of research, review, short communications, case reports and image articles.

This is an open access journal providing easy access to its viewers globally.

Submit manuscript to <https://www.scholarscentral.org/submissions/neuropsychiatry.html>

Upcoming Special Issue - New Insights about Major Depression and Personality Disorders



Recently Published Papers

Principle of Neurorehabilitation

Author(s): Arnold S

Neurorehabilitation is a complex medical process which aims to aid recovery from a nervous system injury, and to minimize and/or compensate for any functional alterations resulting from it. ...

Abstract

PDF

Current Issue
Volume 11, Issue 2

Neuropsychiatry
(London)



ISSN
Print: 1758-2008
Electronic: 1758-2016

PMC/PubMed Indexed Articles

Toward an exportable parent training program for disruptive behaviors in autism spectrum disorders

Twitter feed

疑點

POINT 1

網址為.cn, 卻用Gmail收稿

POINT 2

標榜快速出版

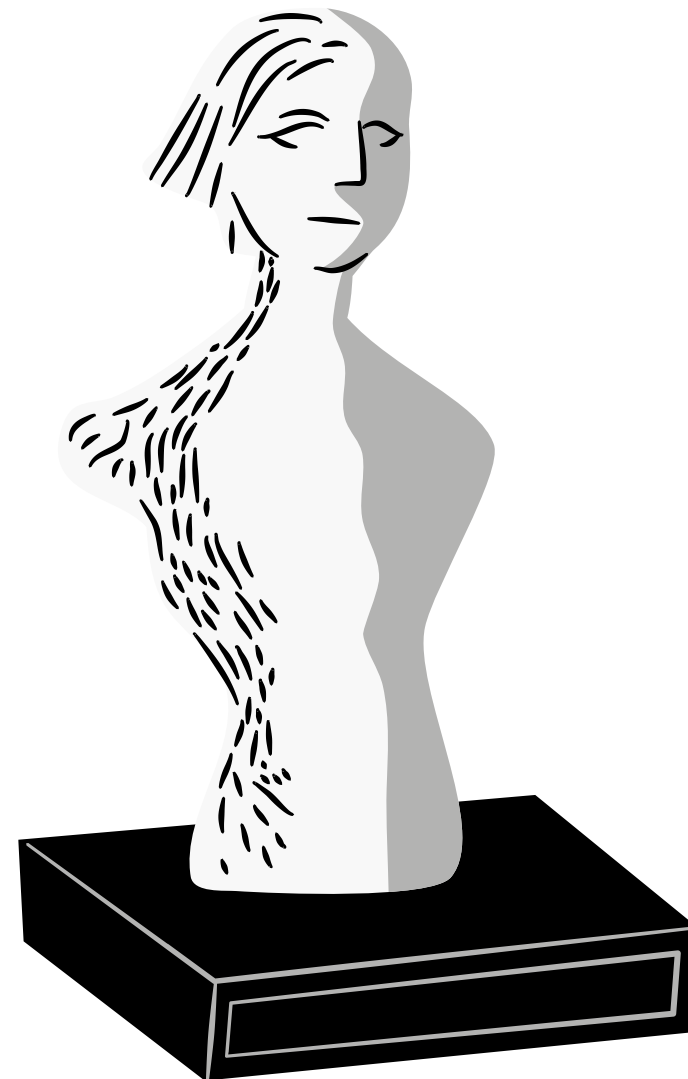
收稿24小時內告知是否接受
收到費用後48小時內完成出版

POINT 3

使用假上交大logo

膺品型

CLOINED JOURNALS




Journal of Shanghai Jiaotong
University.

(假)



Journal of Shanghai Jiaotong University (Science)



 [Editorial board](#)  [Aims & scope](#)  [Journal updates](#)

As an innovative, fundamental and scientific journal, *Journal of Shanghai Jiaotong University (Science)* aims to describe the latest regional and global research results. As such, it serves as an international platform for academic exchange between experts, scholars and researchers at Shanghai Jiao Tong University and worldwide.


All articles in *Journal of Shanghai Jiaotong University (Science)* are peer reviewed. The targeted fields include: Naval architecture and ocean engineering, mechanical engineering, power engineering, material science and engineering, electrical engineering, information and computer science, chemical engineering, bioengineering, architecture, management science and latest research results in mathematics, physics and engineering mechanics. The forms of articles include (but not limited to): academic articles, research reports and general reviews. — [show all](#)

Editor-in-Chief

Hang Zheng

Publishing model

Hybrid. [Learn about publishing Open Access with us](#)

 You have access to our articles

For authors

[Submission guidelines](#)

[Ethics & disclosures](#)

[Fees and funding](#)

[Contact the journal](#)

[Submit manuscript](#)

Explore

[Online first articles](#)

[Volumes and issues](#)

REACT

Editors

Chairmen:

Shengwu Xie, Department of Physics, Shanghai Jiaotong University, Shanghai, China

Vice Chairmen:

Zhongqin Lin, School of Mechanical Engineering, Shanghai Jiaotong University, Shanghai, China

Yinghong Peng, School of Mechanical Engineering, Shanghai Jiaotong University, Shanghai, China

Wenjun Zhang, School of Electronic, Information and Electrical Engineering, Shanghai Jiaotong University, Shanghai, China

Editor-in-chief:


Hang Zheng, Department of Physics, Shanghai Jiaotong University, Shanghai, China

Associate Editor-in-chief:

Hua Fang, Editorial Office of Journal of Shanghai Jiaotong University, Shanghai Jiaotong University, Shanghai, China

Hanzhong Gong, Editorial Office of Journal of Shanghai Jiaotong University, Shanghai Jiaotong University, Shanghai, China

Shidi Tao, Editorial Office of Journal of Shanghai Jiaotong University, Shanghai Jiaotong University,

 You have access to our articles

For authors

[Submission guidelines](#)

[Ethics & disclosures](#)

[Fees and funding](#)

[Contact the journal](#)

[Submit manuscript](#)

Explore

[Online first articles](#)

[Volumes and issues](#)

[Sign up for alerts](#)



UGC-CARE APPROVED MULTIDISCIPLINARY JOURNAL
Journal of Shanghai Jiaotong University

International Peer Reviewed | Open Access | A Monthly Publishing Journal



FAKE

Home

Call For Papers

For Authors ▾

Archives

Editorial Board

Current Issue ▾

Contact Us

Scopus Preview Dashboard Author

Source details

Journal of Shanghai Jiaotong University (Science)
 Scopus coverage years: from 2005 to Present
 Publisher: Shanghai Jiaotong University Press
 ISSN: 1007-1172
 Subject area: Multidisciplinary

[View all documents >](#) [Set document alert](#) [Save to source list](#) [Journal Homepage](#)

[CiteScore](#) [CiteScore rank & trend](#) [Scopus content coverage](#)

**UGC-CARE (GROUP-II)
Presently Active Journal**

UGC-CARE Direct Link ➔

Username: ugccarecheck@gmail.com
Password: 123456



Paper Publishing Policy

Journal of Shanghai Jiaotong University publishes articles that emphasizes research, development and application within the fields of engineering, science and technology. All manuscripts are pre-reviewed by the editorial review committee. Contributions must be original, not previously or simultaneously published elsewhere, and are critically reviewed before they are published. Papers, which must be written in English, should have sound grammar and proper terminologies.

We invite you to submit high quality papers for review and possible publication in all areas of engineering, science and technology. All authors must agree on the content of the manuscript and its submission for publication in this journal before it is submitted to us. All the manuscripts submitted for publication are first peer reviewed to make sure they are original, relevant and readable. Manuscripts should be submitted via Online Submission only.

Call For Papers

- | | |
|----------------------|---|
| ☰ Subject Area: | Multidisciplinary |
| 📅 Submission Date: | Through out the Year |
| ☑ Acceptance Status: | ✗ Within 24 Hours |
| 📖 Publication Time: | ✗ Within 48 hrs after receiving the publication fee. |
| 🕒 Frequency: | 12 issues per year |

✗ [✗ Submit Article at: editorjsju@gmail.com](mailto:editorjsju@gmail.com)

✗ Indexing




Downloads



Paper Template



Editor-in-Chief

 Dr. Xuhui Feng, National Renewable Energy Laboratory, USA

Editorial Board

Dr. Josep M Bergada, Department of Fluid Mechanics, Polytechnic University of Catalonia, Spain

Dr. Noel Perera, School of Engineering and Built Environment, Birmingham City University, UK

Dr. Mahdi Bamdad, Department of Mechanical and Automation Engineering, Chinese University of Hong Kong, China

Dr. Baboo Yashwansingh R. Surnam, Department of Mechanical and Production Engineering, University of Mauritius, Mauritius

Dr. Sachin Singh Gautam, Department of Mechanical Engineering, Indian Institute of Technology, India

Dr. Fatemeh Farhatnia, Branch of Khomeinishahr, Islamic Azad University, Iran

Dr. Pradip Kumar Talapatra, Gandhi Institute of Engineering & Technology, India

Dr. Ameen Al-Edani, University of Basrah, Iraq

Dr. Ashok Dargar, Jamia Millia Islamia University, India

Dr. Sachindra Rout, National Institute of Technology, India

Dr. C. Murali Krishna, Maulana Azad National Institute of Technology, India

Dr. Seetharama K.S., Ibra College of Technology, Oman

Dr. Kvs Seshendra Kumar Karri, Gitam University, India

Dr. Zwelibanzi Dlodlo, National University of Science and Technology, Zimbabwe

Dr. Sanjeev Kumar, Department of Mechanical Engineering, YMCA University of Science & Technology (State Government University) Faridabad- Haryana, India

Dr. Mohammad Heidari Rarani, Department of Mechanical Engineering, Faculty of engineering, University of Isfahan, Iran

Dr. Om Prakash Upadhyay, Department of Mechanical Engineering, MJP Rohilkhand University, India

Dr. Prabhat Kumar Dhara, Faculty of Agricultural Engineering, Bidhan Chandra Agricultural University, India

Dr. Shahnewaz Bhuiyan, Department of Mechanical and Production Engineering, Ahsanullah University of Science & Technology, Japan

Dr. Sukhomay Pal, Department of Mechanical Engineering, Indian Institute of Technology Guwahati, India

Assoc. Prof. Abdulkareem, Sh. Mahdi Al-Obaidi, Taylor's University, Malaysia



26



黑名單

白名單

01

Beall's list

02

Stop Predatory Journals

03

List of cloned journals
by UGC-CARE (India)

01

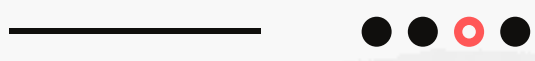
Medline Journals
(current indexed)

02

SCI / SSCI Journals

03

Directory of Open Access Journals
(DOAJ)



掠奪性
PREDATORY

EMPLOYEE OF THE MONTH

期刊 JOURNAL



EX: ESMED GENERAL ASSEMBLY

會議 CONFERENCE

NEXT 

SCOPE DATABASE V.S. SCOPUS DATABASE

資料庫? DATABASE??

[延伸閱讀] [What is the Scope Database? Is it associated with Scopus?](#)

Get in touch with us.



臺北醫學大學圖書館

TAIPEI MEDICAL UNIVERSITY

LIBRARY

Email

asktmul@tmu.edu.tw

Phone

02 2736-1661 ext. 2515

